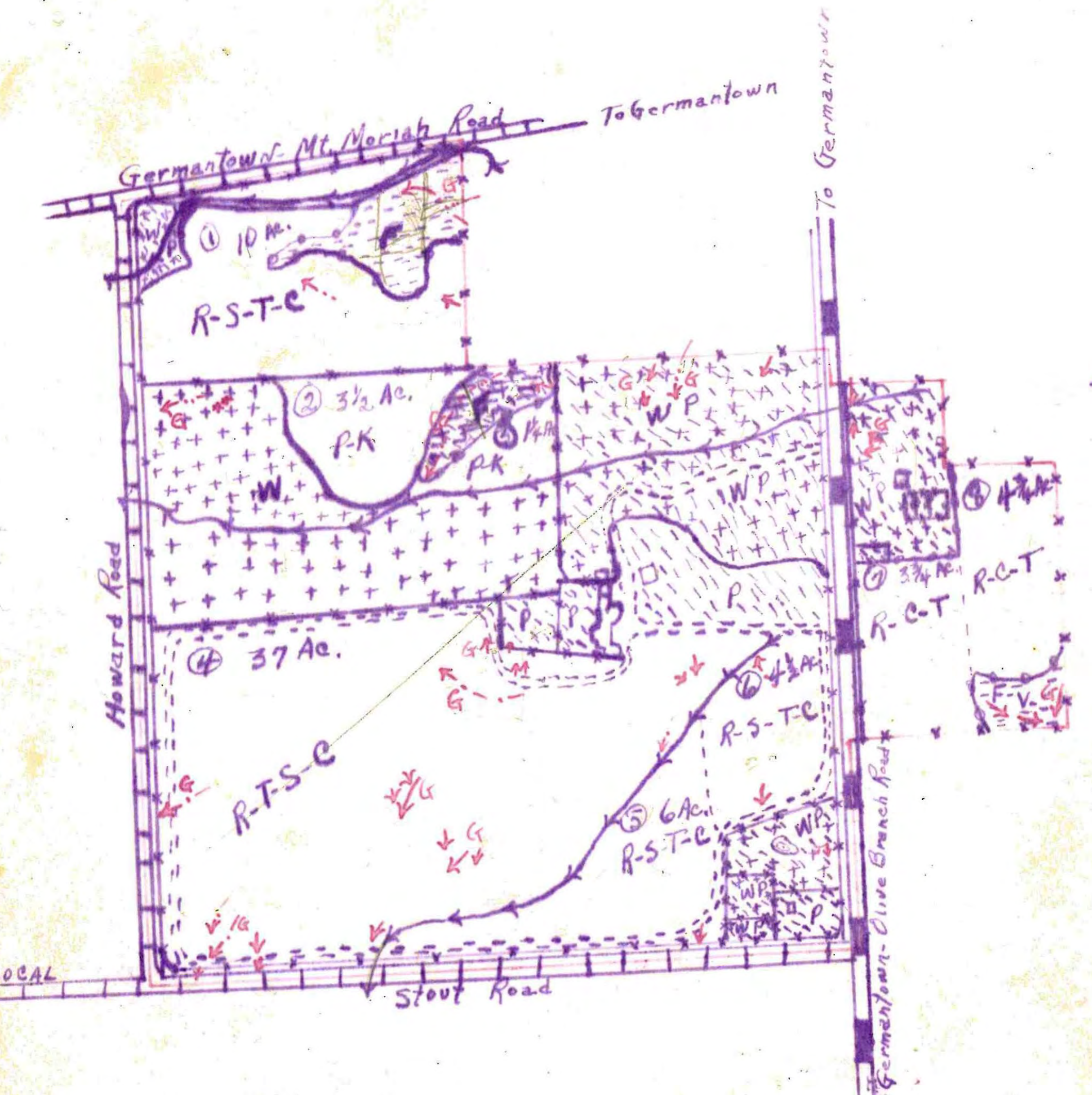


# Map of James Hammond Farm

119 acres, 3/4 miles south of Germantown



This map was included in the Cooperative Agreement for Work in Soil Conservation, signed January 2<sup>nd</sup> 1936, between James Hammond and the Soil Conservation Service, Dept. of Agriculture. The work was completed by Collierville CCC Camp SCS-2.

# Symbols for Land Use Map

R - rotation

P - pasture - permanent

S - strip cropping or seeding

T - terrace

K - contour furrowing

C - contour tillage

F - forest - new

W - forest - old timber



old fence, stationary



old fence, removed



relocated fence